

Isothermal Containers



CARGO LINE

Maximum flexibility in transport management
Reliability and quality protection
Safety and product traceability
Unbroken cold chain

MELFORM, leader in the sector of the temperature controlled transport, for over 50 years design and produce isothermal containers and mobile refrigerators suitable for the transport and distribution of foods, pharmaceuticals and products for which accurate temperature control is needed.

ATP certified for the transport of perishable goods by road, Melform isothermal containers are available in a wide range of versions with front opening, with castors, pallet or feet and equipped with dedicated accessories. Melform products can be **customized** in color, shape and size to meet all customer needs. This represents the strength of a brand that has always wanted to attend the consumer towards the optimal choice.

Furthermore, the use of the eutectic plates placed inside the containers allows to extend temperature retention times of products.



TECHNOLOGY AND RAW MATERIALS

Cargo isothermal containers are produced with the rotational moulding technology: the container and the door have **monolithic** structure (devoid of corners, junctions and weldings). They are made in polyethylene suitable for food contact and insulated with polyurethane foam without CFC and HCFC. All the accessories and construction details are in **stainless steel**.

Melform always guarantees the highest possible quality in each products that accomplishes.

UNBROKEN COLD CHAIN

Cargo isothermal containers allow to easily handle the distribution of perishable products without cold chain interruption, whatever the required temperature.

SAFETY AND QUALITY PROTECTION

Melform insulated boxes allow to carry different types of material at different temperatures on normal vehicles and allow correct operations in HACCP environment. Upon request, Melform containers are equipped with RFID systems and USB DATA LOGGER for temperature control monitoring.



Fully recyclable at the end of the operating life.

HYGIENE, SAFETY AND NO RISK OF CROSS CONTAMINATION.



DELIVERIES ANYWHERE ANYTIME

Do you have a small van or a big truck?
Do you transport fresh or frozen goods?

Choose the insulated container that best suits your needs.

WHY MELFORM?

ABSENCE OF THERMAL BRIDGES

Components made of **STAINLESS STEEL**

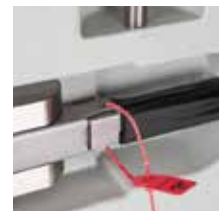
DEDICATED ACCESSORIES

CUSTOMIZABLE:
colour, size and configuration



Melform has listened to the needs of its customers and has produced a **range of customizable products**.

Find measures, features, accessories to suit every need: find out more on logistics.melform.com



Invest the right way!

CARGO LINE Isothermal containers

Dimensions Shown (WxDxH)

MAILLON - Multitemperature transport

| Capacity | Model | Weight Kg | External Dim. mm | Internal Dim. mm | CODE |
|----------|-----------|-----------|------------------|------------------|----------|
| 68 | grey/blue | 13 | 850x450x390 | 750x330x270 | MAIL0006 |
| 68 | sand | 13 | 850x450x390 | 750x330x270 | MAIL0002 |



CARGO 140 - Front opening

| Capacity | Model | Weight Kg | External Dim. mm | Internal Dim. mm | CODE |
|----------|--------------------|-----------|------------------|------------------|----------|
| 140 | without EP runners | 31 | 620x820x710 | 415x620x515 | A1400001 |
| 140 | with EP runners | 31,5 | 620x820x710 | 415x620x495 | A1400002 |



CARGO 150 AS - Top opening

| Capacity | Model | Weight Kg | External Dim. mm | Internal Dim. mm | CODE |
|----------|---|-----------|------------------|------------------|----------|
| 148 | without EP runners | 25 | 690x570x790 | 530x430x650 | A1500011 |
| 148 | dry ice version | 25 | 690x570x790 | 530x430x650 | A1509044 |
| 148 | with runners on lid for eutectic plates | 26,5 | 690x570x790 | 530x430x650 | A1509059 |

CARGO 150 - Front opening

| Capacity | Model | Weight Kg | External Dim. mm | Internal Dim. mm | CODE |
|----------|--------------------|-----------|------------------|------------------|----------|
| 150 | without EP runners | 25 | 570x790x690 | 430x650x530 | A1500012 |
| 150 | with EP runners | 25,5 | 570x790x690 | 430x650x530 | A1509022 |



CARGO 370 - Front opening

| Capacity | Model | Weight Kg | External Dim. mm | Internal Dim. mm | CODE |
|----------|------------------|-----------|------------------|------------------|----------|
| 370 | with castors | 70 | 800x840x1310 | 615x630x960 | 03700001 |
| 370 | with feet | 70 | 800x840x1314 | 615x630x960 | 03700003 |
| 370 | with pallet | 83 | 800x840x1310 | 615x630x960 | 03700010 |
| 285 | chilled eutectic | 113 | 800x840x1310 | 550x590x810 | 03709012 |
| 285 | frozen eutectic | 113 | 800x840x1310 | 550x590x810 | 03709013 |



CARGO 500 - Front opening

| Capacity | Model | Weight Kg | External Dim. mm | Internal Dim. mm | CODE |
|----------|--------------|-----------|------------------|------------------|----------|
| 500 | with castors | 89,5 | 715x850x1675 | 540x660x1370 | 05000071 |
| 500 | with feet | 89,5 | 715x850x1675 | 540x660x1370 | 05000081 |
| 500 | with pallet | 105 | 715x850x1670 | 540x660x1370 | 05000074 |



CARGO 780 - Front opening

| Capacity | Model | Weight Kg | External Dim. mm | Internal Dim. mm | CODE |
|----------|--------------|-----------|------------------|------------------|----------|
| 780 | with castors | 112 | 800x1000x1950 | 610x810x1570 | 07800001 |
| 780 | with feet | 112 | 800x1000x1900 | 610x810x1570 | 07800009 |
| 780 | with pallet | 137 | 800x1000x1900 | 610x810x1570 | 07800003 |



CARGO 900 - Front opening - Ext. Dim. EUROPALLET

| Capacity | Model | Weight Kg | External Dim. mm | Internal Dim. mm | CODE |
|----------|--------------|-----------|------------------|------------------|----------|
| 900 | with castors | 111 | 800x1200x1835 | 600x985x1460 | 09000037 |
| 900 | with feet | 111 | 800x1200x1790 | 600x985x1460 | 09009066 |
| 900 | with pallet | 137 | 800x1200x1790 | 600x985x1460 | 09000074 |



CARGO 1000 - Front opening - Ext. Dim. EUROPALLET

| Capacity | Model | Weight Kg | External Dim. mm | Internal Dim. mm | CODE |
|----------|--------------|-----------|------------------|------------------|------------|
| 1000 | with castors | 130 | 800x1200x1940 | 605x1015x1550 | 10000001EU |
| 1000 | with feet | 130 | 800x1200x1940 | 605x1015x1550 | 10000010EU |
| 1000 | with pallet | 155 | 800x1200x1900 | 605x1015x1550 | 10000002EU |



CARGO 1300 - Front opening - Int. Dim. EUROPALETTE

| Capacity | Model | Weight Kg | External Dim. mm | Internal Dim. mm | CODE |
|----------|--------------|-----------|------------------|------------------|----------|
| 1350 | with castors | 153 | 985x1405x1695 | 810x1210x1340 | 13019009 |
| 1350 | with feet | 153 | 985x1405x1646 | 810x1210x1340 | 13010003 |
| 1350 | with pallet | 180 | 985x1405x1646 | 810x1210x1340 | 13010005 |



CARGO 1300 TW - Front opening - Ext. Dim. ASIAN PALLET

| Capacity | Model | Weight Kg | External Dim. mm | Internal Dim. mm | CODE |
|----------|--------------|-----------|------------------|------------------|----------|
| 1350 | with castors | 150 | 1100x1100x1940 | 900x910x1580 | 1300T003 |
| 1350 | with feet | 150 | 1100x1100x1940 | 900x910x1580 | 1300T009 |
| 1350 | with pallet | 180 | 1100x1100x1940 | 900x910x1580 | 1300T010 |

RAPID COOLER

| Capacity | Model | Weight Kg | External Dim. mm | Internal Dim. mm | CODE |
|----------|---|-----------|------------------|------------------|----------|
| 1075 | rapid cooler without rack | 210 | 985x1405x2007 | 810x1210x1100 | 13019013 |
| 1075 | complete with rack for GN 1/1 plates | 390 | 985x1405x2007 | 810x1210x1100 | 13019015 |
| 1075 | complete with rack for Cargo 370/500/780 plates | 300 | 985x1405x2007 | 810x1210x1100 | 13019016 |
| 1075 | complete with rack for Cargo 900/1000 plates | 319 | 985x1405x2007 | 810x1210x1100 | 13019017 |
| 1075 | complete with rack for Cargo 1300/1300TW plates | 310 | 985x1405x2007 | 810x1210x1100 | 13019018 |

*Single racks available on request.



Choose the right model for your business



CASTORS VERSION



FEET VERSION



PALLET VERSION

| | | | | |
|-----------------------|---|---|--|---|
| CONFIGURATIONS |  | <p>LABEL HOLDER For the identification of the contents or destination</p> |  | <p>ANALOGUE THERMOMETRE To check the internal temperature of the container during transport</p> |
| |  | <p>FISH TRANSPORT For a better subdivision of the load and to collect the ice-melt water draining from the seafood storage boxes</p> |  | <p>CRYO POWER BOX Cryogenic refrigeration automated system. Especially indicated for the maintenance of fresh and frozen thermal of the products for a prolonged time.</p> |
| ACCESSORIES |  | <p>DRIP-TRAY Useful accessory for fish versions to collect the ice-melt water draining from the seafood storage boxes</p> |  | <p>EUTECTIC PLATES To increase thermal maintenance performance over time</p> |
| |  | <p>STAINLESS STEEL GRIDS For a better subdivision of the load</p> |  | <p>GN ADAPTORS To house GN pans</p> |
| |  | <p>DATALOGGER USB To record the temperature data during transport</p> |  | <p>SECURITY CLOSURE Handle properly studied for tamper-proof system</p> |



Company with ISO 9001:2015 certified management systems



Via Savigliano 34 - 12030 Monasterolo di Savigliano (CN)
Tel. +39 0172812600 - Fax +39 017285991 - info@melform.com
GPS: Lat 44.681363 - Long 7.624809
www.melform.com

Melform Sales Communication Publication PBCB124GB. Information, photos and description contained in this publication are supplied for informative purposes and are not binding. Bonetto S.r.L. reserves the right to make changes to the contents of this publication without prior notification. The pictures used are protected by © copyright. Complete or partial reproduction onto any support without written authorization is strictly forbidden.

Melform is a trademark property of Bonetto S.r.L.